

Research and Evaluation

Who do we work with?

We can carry out research or provide evaluation support to any directorate within Hertfordshire County Council, as well as supporting external partners such as district and borough councils. This could be from basic evaluation advice to managing a full evaluation or research project.

What are some examples of the previous work we've done?

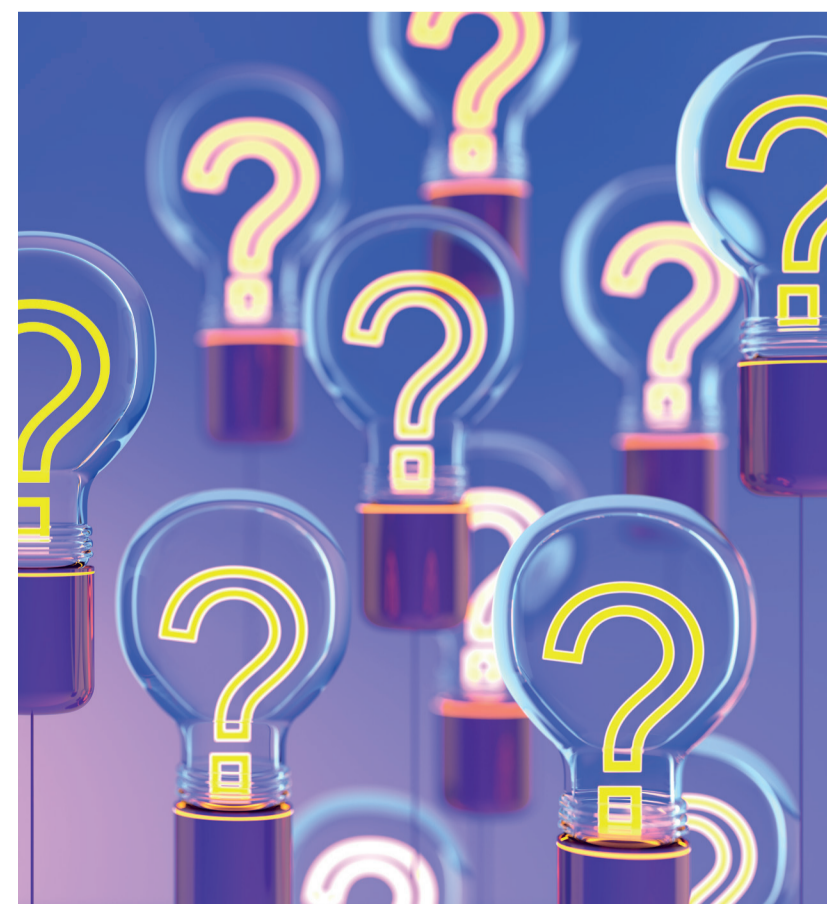
You can find completed evaluation reports on the www.hertshealthevidence.org

Is there a cost for this service?

Although we can provide basic advice free of charge, there is a cost for carrying out research or an evaluation on your behalf.

How can you contact us?

For more information, please email PH.Evaluation@hertfordshire.gov.uk



What does the Research and Evaluation Team do?

The Research and Evaluation Team can carry out research or provide evaluation support to any directorate within Hertfordshire's local authorities, as well as supporting voluntary/community organisations and other service providers. The team can support all the stages from initial assessment to delivery and final reporting on the evaluation of a project or service, as well as collaborating with organisations to train colleagues in research and evaluation methods.

What is the difference between research and evaluation?

Research is about asking questions and improving our knowledge about the world around us. For example, it may attempt to either prove or disprove a theory somebody has about how something works or the relationship between two variables.

Evaluation, on the other hand, tends to ask questions about whether something works the way it is supposed to work and how it can be improved. For example, this could be an evaluation of a programme, project, intervention or a service that you are running.

Why is research and evaluation important?

Research within a specific local authority setting can be useful as it helps you to understand the needs of local residents in relation to the services that are currently provided or may need to be provided in the future. It contributes to the evidence base and justification for planning, running, amending or discontinuing services for residents.

The evaluation of services and interventions is important because it can tell you how well a service or intervention is working or tell you if it is doing what it is supposed to do. For example, is it having a positive impact on service users or residents? Evaluation can help you demonstrate if your service is good value for money, and it can also help you to identify ways to improve your services and interventions.

Good use of research and evaluation can support applications for both internal and external sources of funding, as it can justify the need for the service or intervention you are proposing.